



LOWESTOFT DRIVE SLOUGH, SL1 6PB

£1,700 PCM

On this popular development in Cippenham is this beautifully presented three bedroom mid terrace house which is tucked away and located towards the end of a quiet cul-de-sac. The property also has driveway parking for two cars and front access to the single garage.

Conveniently located for Burnham Rail Station (due to be part of the CrossRail



1



1



3

EPC C

**cameron
king**
ESTATE AGENTS

Development), major road links, and amenities viewing is highly recommended.

Once you enter into the property you will pick up on the crisp clean presentation which continues throughout. The spacious entrance hall is inviting with doors to the reception room, kitchen and access to the garden. The main living area is a great size being 14ft and is naturally lit with carpet flooring. The kitchen is well equipped with a range of eye and base level storage units, wooden work surfaces, built in gas hob, oven, washing machine and space for fridge/freezer.

Presenting well throughout, upstairs you will find three bedrooms, two double rooms and a great size single bedroom ideal for a study or cot room. Bathroom is fitted with a white suite including panelled bath tub, wash hand basin, wc with tiled walls.

Available from 27th December.

- **Driveway Parking For Two Vehicles**
- **Within a 15 Minute Walk Of Burnham Rail Station**
- **Easy Access To M4 Motorway (Junction 7)**
- **Close to Local Cippenham Schools And Shops**
- **Single Garage**
- **Excellent Transport Links**

Directions



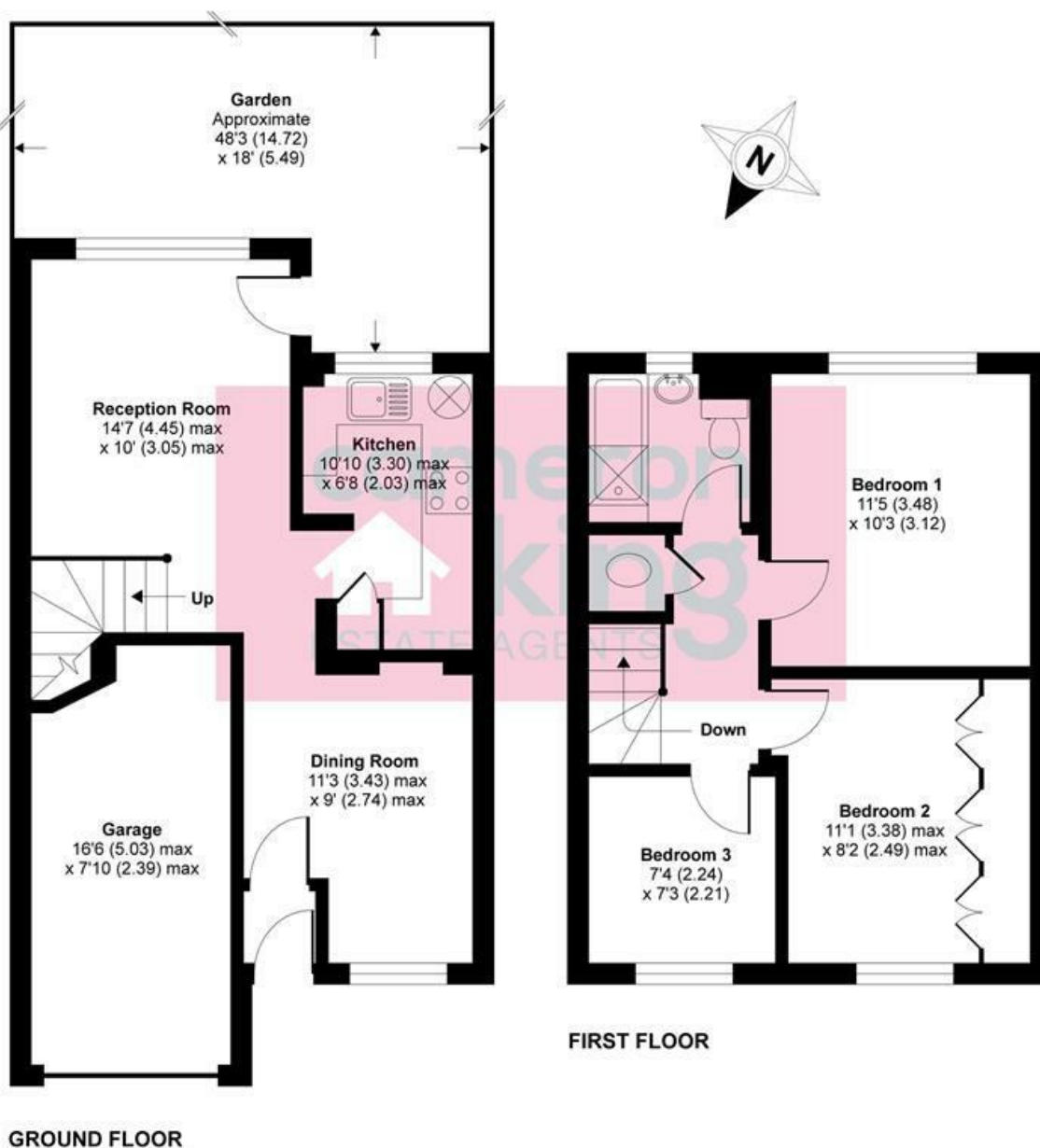
Lowestoft Drive, Slough, SL1

Approximate Area = 745 sq ft / 69.2 sq m

Garage = 122 sq ft / 11.3 sq m

Total = 867 sq ft / 80.5 sq m

For identification only - Not to scale



Floor plan produced in accordance with RICS Property Measurement Standards incorporating International Property Measurement Standards (IPMS2 Residential). © nichecom 2021. Produced for Cameron King Estate Agents. REF: 768700

**cameron
king**
ESTATE AGENTS

411 Bath Road, Slough, SL1 5QL
t: 01628 667442
e: sales@cameronking.co.uk



rightmove

Zoopla

PrimeLocation.com